

Notes for collecting samples for RHDV analysis

Thank you for collecting a sample for RHDV analysis. Below is some basic information for you in regards to collecting a sample and posting it back to us for analysis:

The tube for your sample to go in contains a preserving liquid known as RNA Later. RNA Later preserves genetic material at room temperature, eliminating the need for freezing or refrigeration. RNA Later is a non-hazardous substance, however the following safety precautions are recommended:

- Do not inhale
- In case of skin contact – wash off immediately with soap and plenty of water
- In case of eye contact – remove contact lenses (if any), rinse thoroughly with plenty of water for at least 15 minutes and consult a physician
- If swallowed rinse mouth with water and obtain immediate medical attention

Please make sure you only put one sample in each container.

You only need to collect EITHER liver OR leg bone, not both.

If you are collecting samples from more than one rabbit and have received multiple containers, please check the label on the container to ensure the correct rabbit sample goes in the correct container.

You can put the return reply-paid envelopes in the regular post as the samples will be stable at room temperature.

If you have any questions or are unsure, please email us at RHDboost@invasiveanimals.com

Thank you for participating in the monitoring of rabbit biocontrol agents and rabbit viruses.
The RHD Boost team.

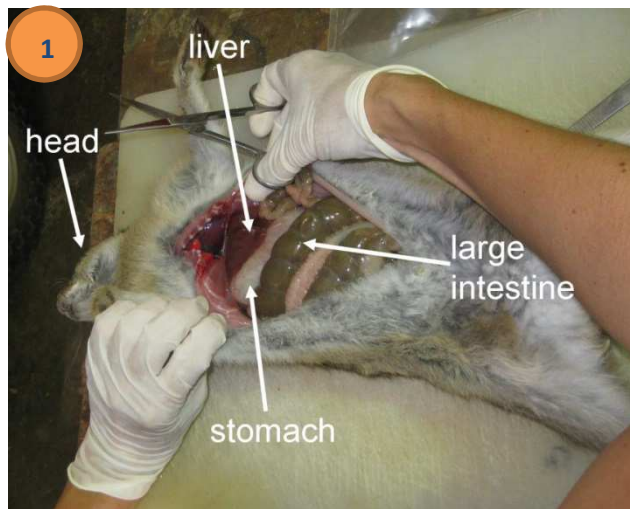
How to collect a sample for RHDV analysis

This page contains information on how to collect liver OR bone samples from dead rabbits for further analysis. Please note: You only need to provide a liver OR bone sample per vial, not both.

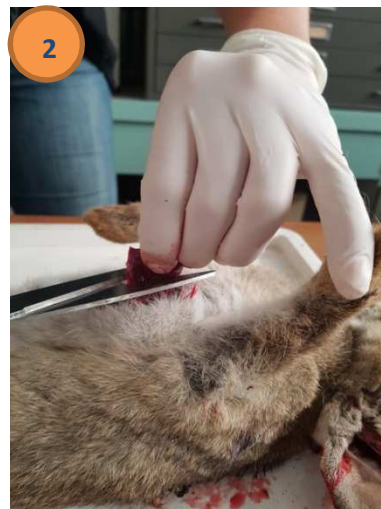
Please clean your scissors/knife and bench with bleach or warm soapy water between each rabbit. Please take care when handling scissors or any other sharps during sample collection. Please ensure you have defrosted the rabbit. This will make sample collection easier.

Option 1. Sampling liver.

Step 1. Carefully cut open up your rabbit carcass and locate the liver. The liver is dark red in colour and located above the stomach.



Step 2. Cut off a small piece of the liver (approx. 2cm x 2cm).



Step 3. Insert the liver sample into the sample container. Be careful not to displace the preserving liquid, and ensure the entire sample is submerged in the liquid.



Step 4. Screw the cap onto the container, ensuring the cap is on properly and tight to prevent any leakage, and place it into the Reply Paid envelope between the absorbent layers. Then simply post the envelope back to us.



Option 2. Sampling leg bone.

Step 1. Select one hind leg of the rabbit, and separate it from the carcass. Remove the fur and flesh, then remove the head of the bone by applying pressure and snapping the bone. This is so it fits within the container.



Step 2. Please remove any flesh still on the bone, and insert the bone into the container, broken end first. Be careful not to displace the preserving liquid.



Step 3. Please ensure the entire leg bone is fully submerged in the preserving liquid.



Step 4. Screw the cap onto the container. Ensuring the cap is on properly and tight to prevent any leakage and place it into the Reply Paid envelope between the absorbent layers. Then simply post the envelope back to us.



If you have any questions about this procedure, please contact the RHD Boost Team – Email RHDboost@invasiveanimals.com

Thank you for your assistance.